

Residence "EDEN CARAIBE"

M.O. : SARL EDEN CARAIBE

BATIMENT A APPARTEMENT 4 NIVEAU +1

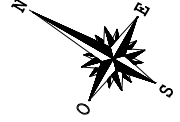
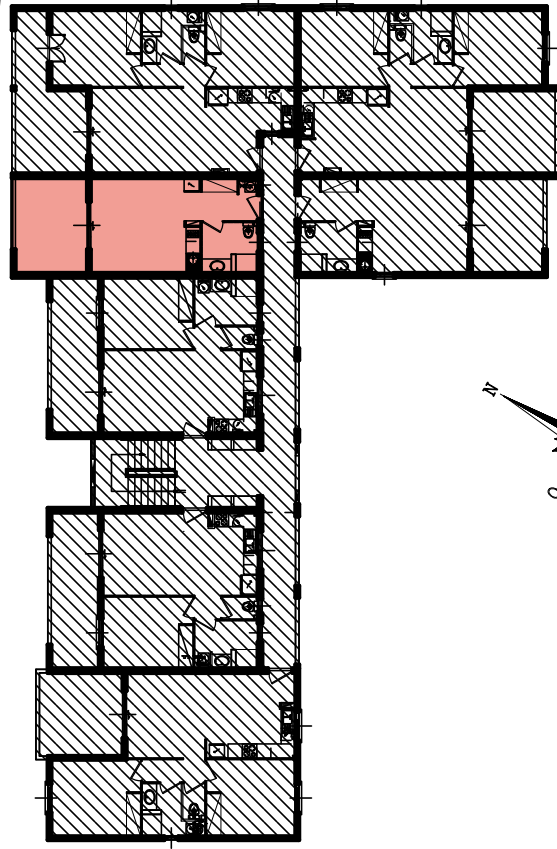
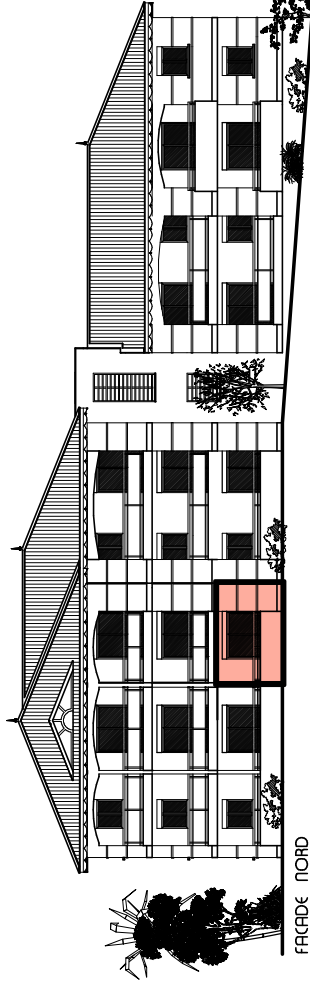
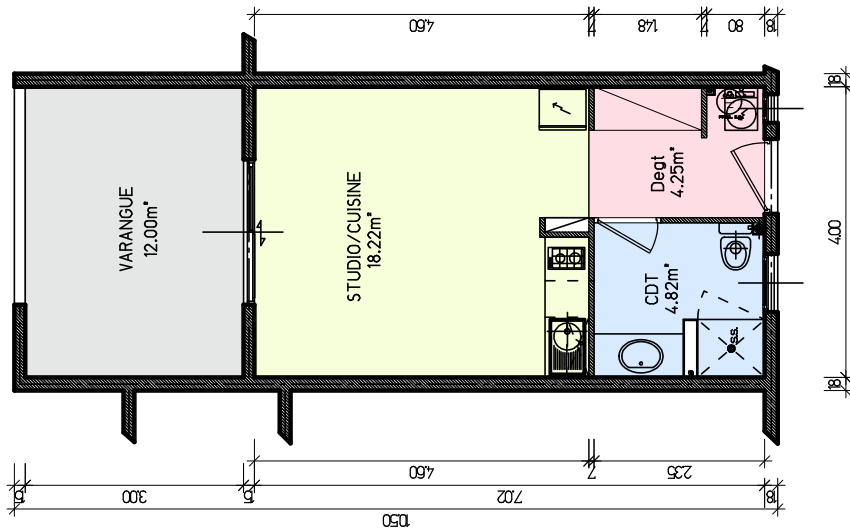


TABLEAU DE SURFACE
 STUDIO /CUISINE = 18.22m²
 CD TOILETTE = 4.82m²
 DEGAGEMENT = 4.25m²
 VARANGUE = 12.00m²

SURF HAB= 27.29m²
 SURF UTILE= 39.29m²